

Contents

Driver Package Installation	2
Symbian	
Installation	4
Activation	6
Functions	7
Function Keys	9
PPC Windows Mobile 2003 (Broadcom)	
Installation	10
Activation / Pairing	12
Function Keys	14
PPC Windows Mobile 2005 (Broadcom)	
Activation / Pairing	15
Function Keys	17
PPC Windows Mobile 2003 (Microsoft)	
Installation	18
Activation / Pairing	19
Function Keys	20
Other Functions	21
FAQ's & Troubleshooting	22

Requirements:

Windows 98 / ME / XP / 2000

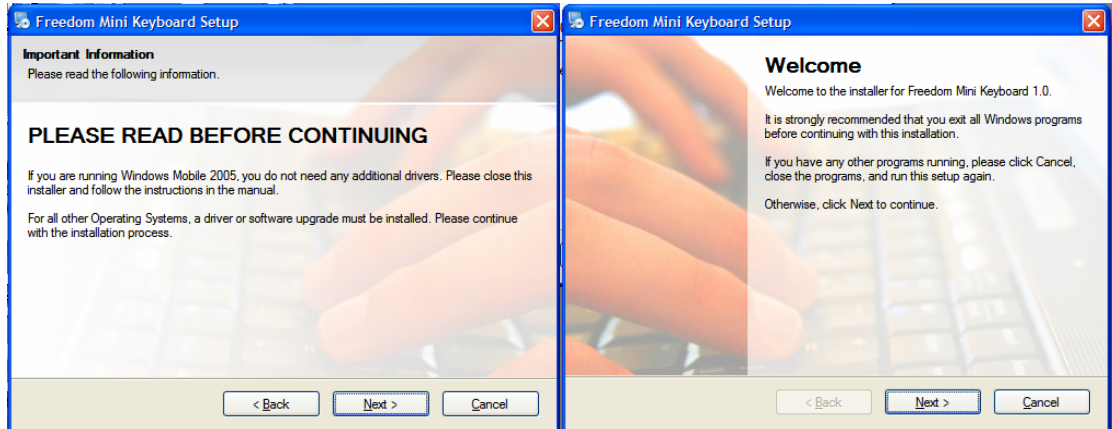
Latest version of Nokia PC Suite or ActiveSync

Compatible PDA or Smartphone

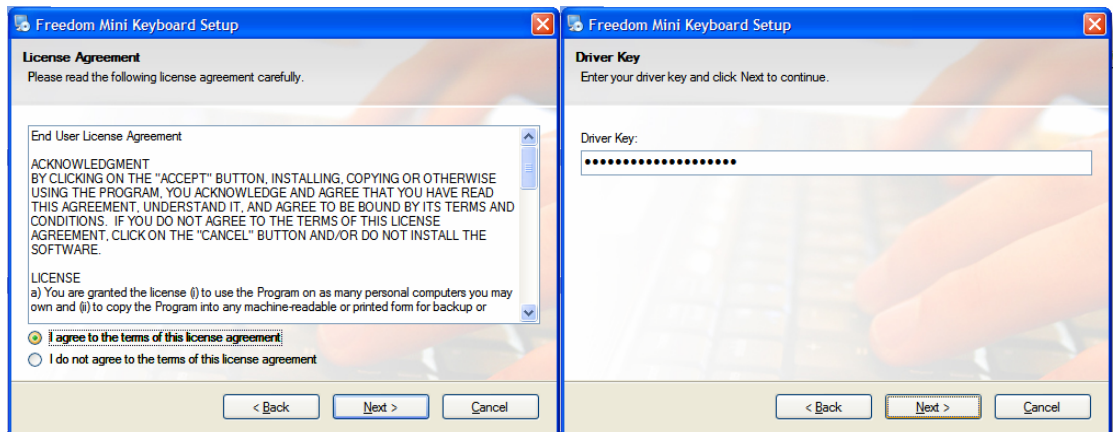
Acrobat Reader (for manual)

Driver Package Installation

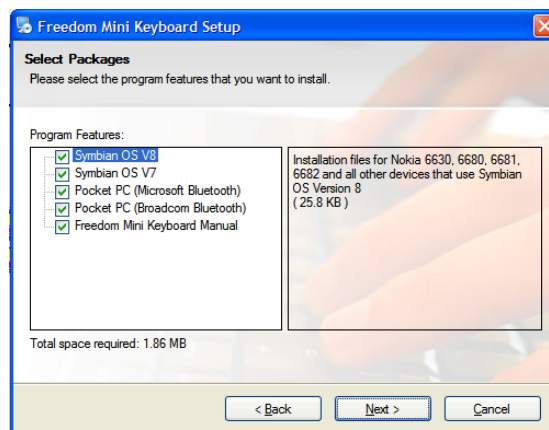
- 1) Insert the CD or, if downloaded from the website, open the minidrivers.exe and the installer will start
- 2) Please read each screen in full and follow the on screen prompts.



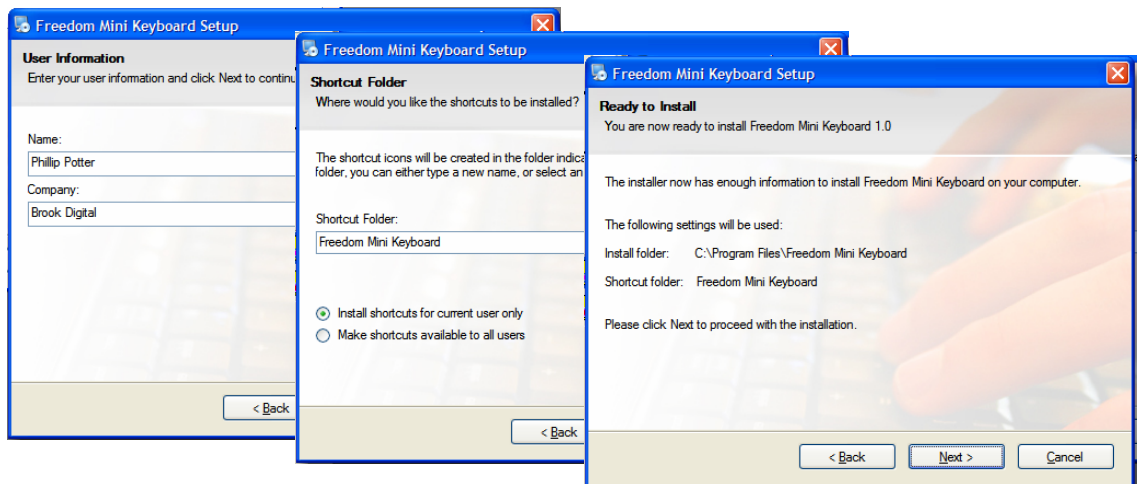
- 3) When entering the Driver key, please ensure you enter it exactly as it is shown on your CD Sleeve or email.



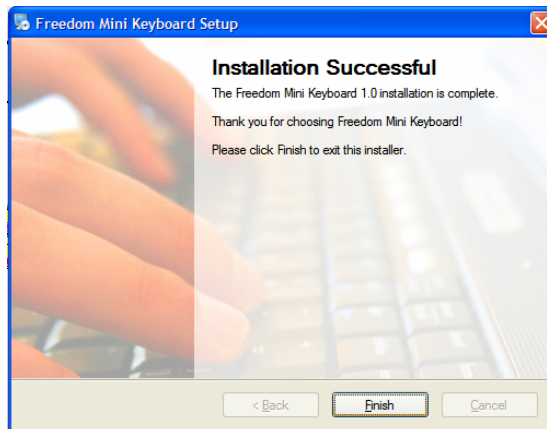
- 4) When selecting the driver to install, you may install any or all of them. By clicking on the driver name, you can see a description of each driver.



5) Continue following the on screen prompts to finish the driver installation.



6) Once installed, you can access the individual drivers from the Start menu on your PC.

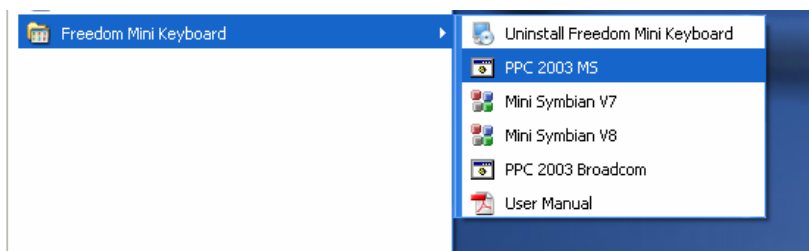


Symbian Installation

**Please ensure you have the latest version of Nokia PC Suite installed.
The latest version can be downloaded from www.nokia.com**

Please see page 2 of this manual for Driver Package installation instructions.

- 1) Click on Start → All Programs → Freedom Mini Keyboard →
- 2) Now select the driver you wish to install to your device.



- 3) Click on the driver you wish to install and Nokia PC Suite will install the driver on to your device. Please follow the on screen prompts.

- 4) On your handheld you should now see
Select Yes to continue



- 5) Select Yes to continue the installation



- 6) Select Install and then select OK



- 7) Select between Phone Memory or Memory Card.

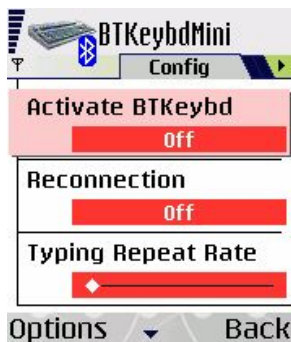


- 8) The driver will finish the installation Process.



Activation

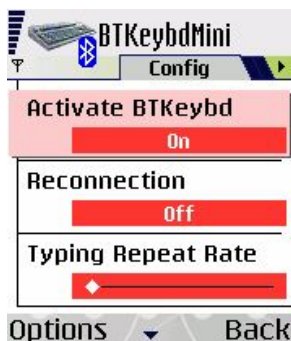
Open the main menu and select the BTKeybd... icon



Switch on the keyboard using the on / off switch on the top of the keyboard and then press and HOLD the "Link" key on the keyboard for up to 5 seconds to start discovery mode. The keyboard light will start to flash blue when in discovery mode.

Select Activate Keyboard your handheld will now search for your Freedom Mini Keyboard.

Once the Mobile Keyboard has been found, select it and then the keyboard and device will pair with each other

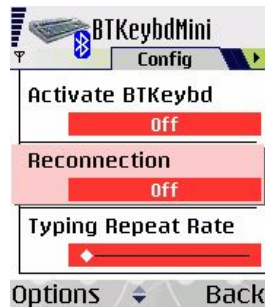


Congratulations! Your Freedom Mini Keyboard is installed and is ready to use.

Functions

Reconnection: This will force your handheld to remember your keyboard. The next time you connect your device to the keyboard, it will not search for any further devices, but automatically connect instead to the last keyboard it was connected to.

Important: Do not turn the Reconnection function on until you have paired with a keyboard at least once. Failure to comply with this will result in you not being able to activate the keyboard.



Select **Reconnection** to activate the function.

Typing Repeat Rate: This controls the rate at which an individual key will repeat when pressed and held.



Select **Typing Repeat Rate** to activate the function. Move the slider to change between a slow and fast repeat rate.

Typing Repeat Delay: This controls the amount of time it takes before a key that is pressed and held down repeats.



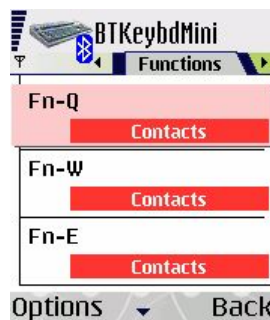
Select **Typing Repeat Delay** to activate the function. Move the slider to change between long and short delay.

Keyboard Test Area: Use this area to test that the keyboard is function correctly with your device.



Select **BTKeybd Test** to activate the function. You can type within the test area to check that the keyboard is functioning correctly.

Function Keys: You can program up to 9 shortcut function keys to an installed program of your choice.



Press the Right Arrow to select the **Functions** tab. Now select the key combination you wish to assign. From the drop down list select the program that you wish to start when the corresponding key combination is pressed.

About: This gives you details about the current driver version installed.



Press the right arrow to select the **About** tab. This gives you details of the driver that is currently installed.

Using your Freedom Mini Keyboard

Function Keys (Pre-defined)

Key Combination	Function
Alt Gr + Tab	Left Soft Key
Alt Gr + X	Right Soft Key
Alt Gr + Z	Select
Num + Tab	Left
Num + X	Right
Num + S	Up
Num + -	Down
Start	Main Menu
Num + Y	1
Num + U	2
Num + I	3
Num + H	4
Num + J	5
Num + K	6
Num + B	7
Num + N	8
Num + M	9
Num + Space	0
Alt Gr + Q	Function Key 1
Alt Gr + W	Function Key 2
Alt Gr + E	Function Key 3
Alt Gr + R	Function Key 4
Alt Gr + T	Function Key 5
Alt Gr + Y	Function Key 6
Alt Gr + U	Function Key 7
Alt Gr + I	Function Key 8
Alt Gr + O	Function Key 9
Link	Turns on bluetooth Discovery Mode
ESC	Not used

Contact Us:

To contact technical support, please visit www.freedominput.com/support1.htm and raise a technical support ticket.

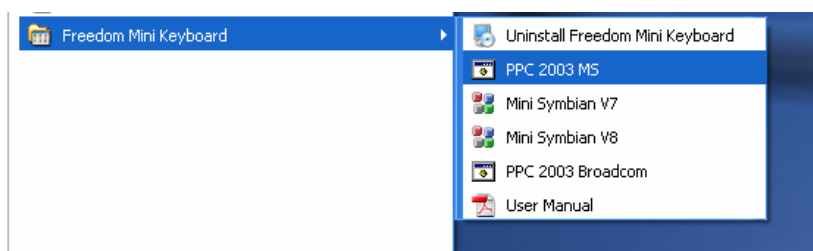
Windows Mobile 2003 Broadcom Bluetooth Installed

Installation

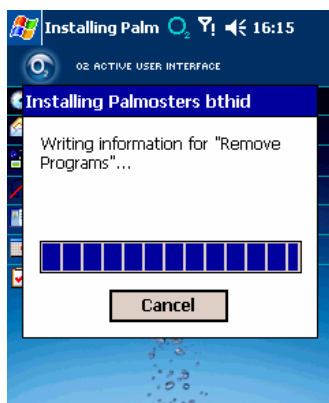
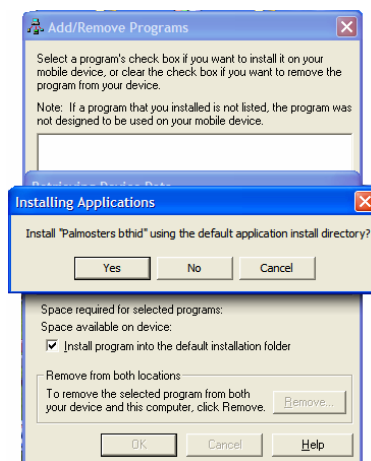
There is currently no driver required to use the Freedom Mini Keyboard with any device that has Windows Mobile 2003 with Broadcom Bluetooth installed. Instead, you must patch your Bluetooth using the software provided to upgrade your device to have full Bluetooth HID compatibility.

Please see page 2 of this manual for Driver Package installation instructions.

- 1) Click on Start → All Programs → Freedom Mini Keyboard → PPC 2003 Broadcom



- 2) Click on 'Yes' to continue the installation onto your PDA



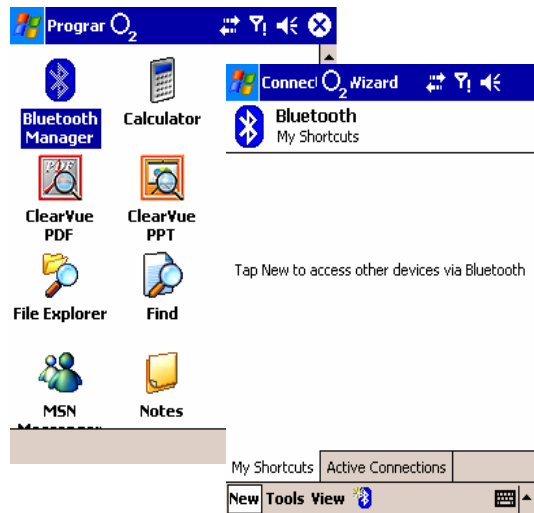
- 3) You will see the information being copied over to your device.

Activation / Pairing

- 1) Tap on the 'Start' button
- 2) Tap 'Programs'



- 3) Tap 'Bluetooth Manager'
- 4) Tap 'New'



- 5) Scroll down to 'Connect to a Keyboard' and tap the icon



- 6) Switch on the Freedom Mini Keyboard and press and **HOLD** the link key until the indicator light on the keyboard flashes blue

- 7) Tap 'Next' on your device and it will search for the Mini Keyboard



- 8) Your device will show a Pin Code on screen which must be typed on the Mini Keyboard. Hold down the 'Num' key on the Freedom keyboard and type the 6 digit number as displayed on your device and then press enter on the Freedom Mini Keyboard.



- 9) Your device and the Freedom keyboard are now paired and ready for use.



Key Functions

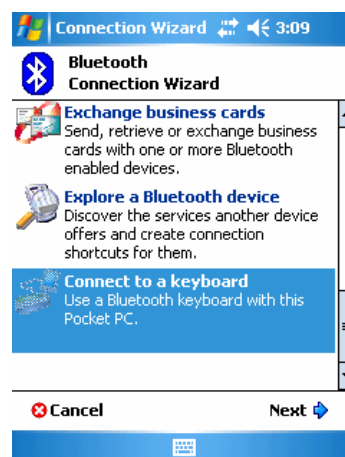
Combination	Function
Num + Q	!
Num + W	@
Num + E	#
Num + R	(
Num + T)
Num + P	\
Num + A	%
Num + D	?
Num + F	:
Num + G	'
Num + ←	=
Num + Z	“
Num + C	,
Num + V	.
Num + ;	*
Num + Ctrl	/
Num + O	+
Alt Gr + S	UP Arrow
Alt Gr + _	Down Arrow
Alt Gr + Tab	Left Arrow
Alt Gr + X	Right arrow
Num + Y	1
Num + U	2
Num + I	3
Num + H	4
Num + J	5
Num + K	6
Num + B	7
Num + N	8
Num + M	9
Num + Space	0
Ctrl + ESC	START
ESC	Close Current Window
Num + Link	Backlight ON
Link	Pairing mode ON
Enter	Enter / Select
Program Specific Functions	
Ctrl + C	Copy
Ctrl + V	Paste
Ctrl + A	Select All
Ctrl + X	Cut
Ctrl + B	Bold
Ctrl + U	Underline
Ctrl + I	Italic

Windows Mobile 2005 does not require any addition drivers to be installed

Windows Mobile 2005

Activation / Pairing

- 1) Tap on the 'Start' button
- 2) Tap 'Programs'
- 3) Tap 'Bluetooth Manager'. Please note that on an HP device this will be under 'Connections' rather than 'Programs', under the 'Bluetooth' icon.
- 4) Tap 'New'
- 5) Scroll down to 'Connect to a Keyboard' and tap the icon



6) Switch on the Freedom Mini Keyboard and press and **HOLD** the link key until the indicator light on the keyboard flashes blue

7) Tap 'Next' on your device and it will search for the Mini Keyboard



8) Your device will show a Pin Code on screen which must be typed on the Mini Keyboard. Hold down the 'Num' key on the Freedom keyboard and type the 6 digit number as displayed on your device and then press enter on the Freedom Mini Keyboard.



9) Your device and the Freedom keyboard are now paired and ready for use.



Key Functions

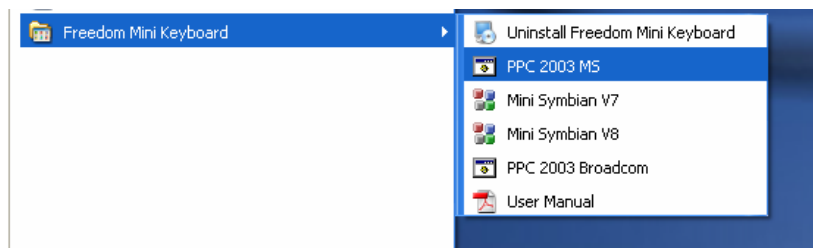
Combination	Function
Num + Q	!
Num + W	@
Num + E	#
Num + R	(
Num + T)
Num + P	\
Num + A	%
Num + D	?
Num + F	:
Num + G	'
Num + ←	=
Num + Z	“
Num + C	,
Num + V	.
Num + ;	*
Num + Ctrl	/
Num + O	+
Alt Gr + S	UP Arrow
Alt Gr + _	Down Arrow
Alt Gr + Tab	Left Arrow
Alt Gr + X	Right arrow
Num + Y	1
Num + U	2
Num + I	3
Num + H	4
Num + J	5
Num + K	6
Num + B	7
Num + N	8
Num + M	9
Num + Space	0
Ctrl + ESC	START
Start	START
ESC	Close Current Window
Num + Link	Backlight ON
Link	Pairing mode ON
Enter	Enter / Select
Program Specific Functions	
Ctrl + C	Copy
Ctrl + V	Paste
Ctrl + A	Select All
Ctrl + X	Cut
Ctrl + B	Bold
Ctrl + U	Underline
Ctrl + I	Italic

Windows Mobile 2003 Microsoft Bluetooth Installed

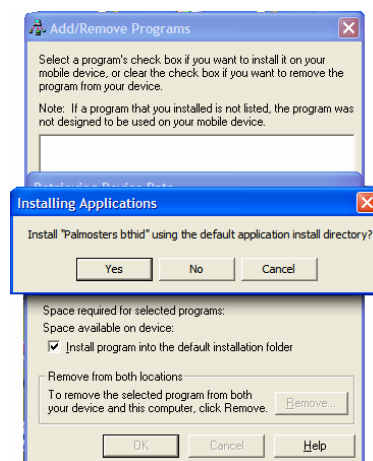
Please see page 2 of this manual for Driver Package installation instructions.

To install the Freedom Keyboard driver onto your PDA:

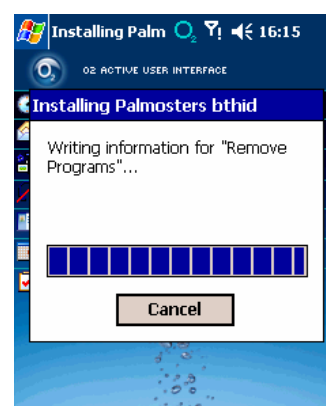
- 1) Click Start → All Programs → Freedom Mini Keyboard → PPC 2003 MS and then follow the onscreen instructions.



- 2) Click on 'Yes' to continue the installation onto your PDA



- 3) You will see the information being copied over to your device.



Once all the information has been copied to your PDA, the installation process will close and the PDA will return back to showing the desktop.

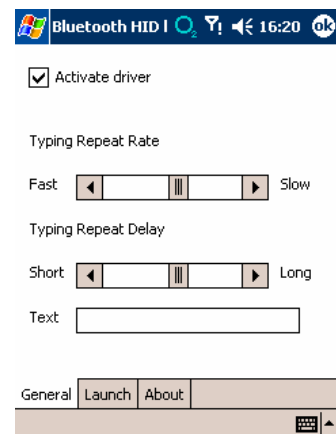
Activation / Pairing

Attn: You do not need to pair your PDA with the Freedom Keyboard, the driver does this for you.

- 1) Tap: Start → Settings → System → BtHID



- 2) To activate the driver, simply tap the Activate Driver box. After a few seconds the screen should show 'Connecting...'. It takes around 15 seconds for your PDA & the Freedom keyboard to search & pair with each other. Once connected the message 'Connection established' will appear on screen and the Freedom Keyboard is now ready to use.



Key Functions

Combination	Function
Num + Q	!
Num + W	@
Num + E	#
Num + R	(
Num + T)
Num + P	\
Num + A	%
Num + D	?
Num + F	:
Num + G	'
Num + ←	=
Num + Z	“
Num + C	,
Num + V	.
Num + ;	*
Num + Ctrl	/
Num + O	+
Alt Gr + S	UP Arrow
Alt Gr + _	Down Arrow
Alt Gr + Tab	Left Arrow
Alt Gr + X	Right arrow
Num + Y	1
Num + U	2
Num + I	3
Num + H	4
Num + J	5
Num + K	6
Num + B	7
Num + N	8
Num + M	9
Num + Space	0
Ctrl + ESC	START
ESC	Close Current Window
Num + Link	Backlight ON
Link	Pairing mode ON
Enter	Enter / Select
Program Specific Functions	
Ctrl + C	Copy
Ctrl + V	Paste
Ctrl + A	Select All
Ctrl + X	Cut
Ctrl + B	Bold
Ctrl + U	Underline
Ctrl + I	Italic

Launch Shortcuts

Ctrl + Q	Re-programmable
Ctrl + W	Re-programmable
Ctrl + E	Re-programmable
Ctrl + R	Re-programmable
Ctrl + T	Re-programmable
Ctrl + Y	Re-programmable
Ctrl + U	Re-programmable
Ctrl + I	Re-programmable
Ctrl + O	Re-programmable
Ctrl + P	Re-programmable

Other Functions

1) Typing Repeat Rate

Move the slider to change the speed at which a key will repeat when held down

2) Typing Repeat Delay

Move the slider to change the length of time before a key will repeat when held down.

